

# B BESPOKE LOGO

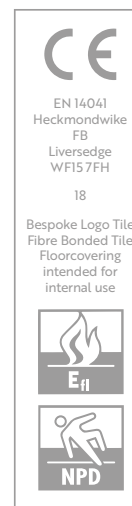
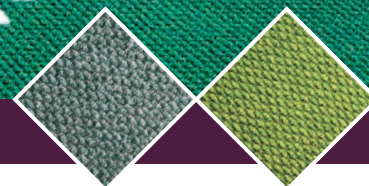
SPECIALIST RANGE

 **MADE IN THE UK. MADE TO LAST.**

## Specification

<b>PRODUCT</b>	Bespoke Logo (Diamond)
<b>FIBRE CONSTRUCTION</b>	85% Polypropylene, 15% Recycled Polyester
<b>WEIGHT</b>	2550gsm
<b>THICKNESS</b>	10.50mm
<b>SIZE</b>	Bespoke, contact Heckmondwike
<b>COLOUR FASTNESS</b>	Light (BS EN ISO 105:B02) >6 Wet Rubbing (BS EN ISO 105:B01) 5 Dry Rubbing (BS EN ISO 105:X12) 5
<b>FLAMMABILITY</b>	(BS6307) Methenamine Pill Test - Pass
<b>BS EN 13501</b>	Class Efl
<b>MAINTENANCE</b>	To achieve maximum life expectancy it is essential to initiate a maintenance schedule from the date of installation. A full guide to cleaning & maintenance is available at: <a href="http://www.heckmondwike-fb.co.uk">www.heckmondwike-fb.co.uk</a>

PLEASE NOTE: For technical reasons, as with all textile materials, it is not possible to colour match from different batches. Orders that need to colour match should be placed at the same time. Production may, therefore, show variations to the sample card. Heckmondwike reserves the right to change or modify product specifications without giving prior notice.



07/21